

# EXTRA-WIDE WIRE MESH GATE

## Installation Instructions:

### No Tools Required

Fig. A



**1** Measure the width of the opening where the gate will be used. (Fig. A)

**2** While holding the gate with the locking bar toward you (numbers will be upright), lift the locking bar and slide the locking pin into the slot that matches the opening size. (Fig. B) Be sure to adhere the wall cups (door sockets) to the opening wall or surface where the four bumpers touch.

Fig. B



**NOTE:** Be sure to place the gate so the locking bar is on the side of the gate that will be away from the child.

**3** Push down on the locking bar. (Fig. C) This should put pressure on the 4 rubber bumpers holding the gate in place.

Fig. C



If the gate is loose in the opening, move the locking pin to the next slot until you get a good solid fit in the opening. Do not force the locking bar down. This could put too much pressure on the gate, causing damage to your opening, the gate or both. (The locking bar will have a slight bow. However, if the bow is large, ease off one slot, making sure it still has a good solid hold in the opening.)

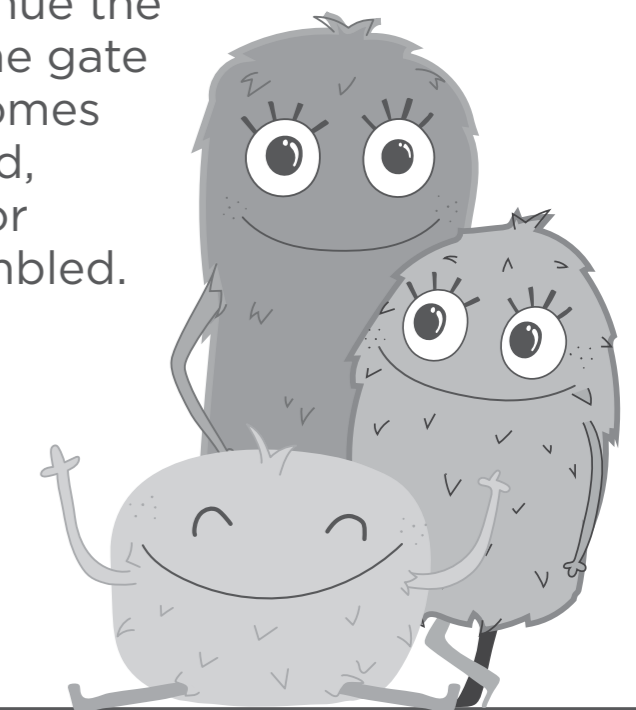
**4** To open the gate, simply pull up on the locking bar.



## Care and maintenance:

To clean: Wipe with a clean, soft, damp cloth and dry thoroughly. Do not use harsh or abrasive cleaners. Always keep the rubber bumpers clean.

Discontinue the use of the gate if it becomes damaged, broken or disassembled.



### WARNING

- You **MUST** install wall cups to keep gate in place. Without wall cups the child can push out and escape.
- STOP** using when a child can climb over or dislodge the gate.
- Children have died or been seriously injured when gates are not securely installed.**
- ALWAYS** install and use gates as directed, using all required parts.
- Use only with the locking mechanism securely engaged.

- NEVER** use to keep child away from pool.
- Intended for use with children from 6 months through 24 months.
- Install with locking mechanism on side away from child.
- This product will not necessarily prevent all accidents. **NEVER** leave child unattended.
- To prevent falls, **NEVER** use at top of stairs.

### ADVERTENCIA

- DEBES** instalar copas de pared para mantener la puerta en su lugar. Sin vasos de pared, el niño puede empujar y escapar.
- DEJE** de usarla cuando un niño pueda trepar sobre la puerta o desprenderla.
- Niños han muerto o sufrido lesiones graves porque una puerta no estaba instalada de manera segura.**
- SIEMPRE** instale y use la puerta conforme a las instrucciones, utilizando todas las piezas requeridas.
- Use sólo con el mecanismo de bloqueo y fijación firmemente enganchado.

- NUNCA** debe usarse para mantener a un niño alejado de una piscina.
- Este producto está diseñado para niños de 6 a 24 meses de edad.
- Instálela solamente con el mecanismo de cierre/traba activado firmemente en el lado opuesto al niño.
- Este portón no necesariamente evita todos los accidentes. **NUNCA** deje a los niños sin supervisión.
- Para prevenir caídas, **NUNCA** use el portón en la parte superior de las escaleras.

THIS PACKAGE CONTAINS ONE PRE-ASSEMBLED GATE AND WALL CUPS. Due to product improvements, the actual product styling and colors may vary.

ASSEMBLED IN USA



PN 2594618