

Instructions for Extensions 5331 / 5332

For use with gate models: 5327, 5328, 5337

Important: Please keep for further reference.

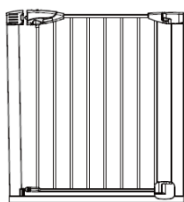
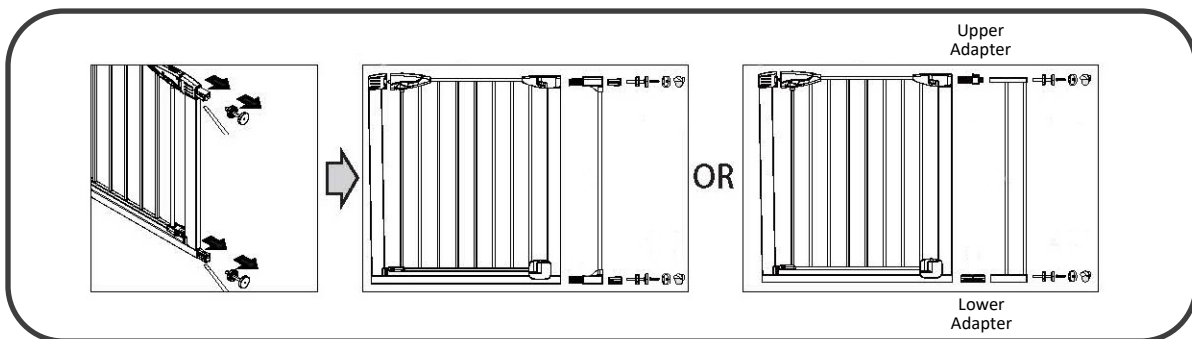
For helpful tips and instructions, please visit our website: www.northstatesind.com
 or contact our Customer Care department via email: CustomerService@northstatesind.com
 Phone (763) 486-1754 or Toll Free: (800) 848-8421

Installation and Operation

Step 1: Measure the width of the opening where you intend to install the gate. Please refer to the chart below to determine the correct installation configuration.

Step 2: To add an extension to the gate, remove all screw adjusters from your gate. Remove the plastic plugs from the top and bottom of one side of the gate and set aside in a nearby location. You may need to use a flathead screwdriver to remove the plugs. Next, insert the top and bottom extension adapters into the extension then insert the extension into gate frame ends. Replace the plastic plugs into the end of the extensions. For the 5.5" and 11" extensions, plastic plugs only need to be inserted into the lower end. Make sure that there are no gaps between gate and extension adapters. If an additional extension(s) is required, repeat this procedure on the other side of the gate.

NOTE: When using multiple extensions, place as equally as possible on either side of the gate frame. The maximum number of extensions that can be used with this gate is three.



Gate frame

<i>Extensions Needed</i>	<i>Opening Size Range</i>
None	29.75" – 32.50"
1-Bar	33" – 35"
2-Bar	35.40" – 37.80"
1-Bar + 2-Bar	38" – 40.60"
4-Bar	41" – 43.3"
1-Bar + 4 Bar	43.50" – 46.10"
2-Bar + 4 Bar	46.10" – 48.80"
1-Bar + 2-Bar + 4-Bar	49" – 51.60"
4-Bar + 4-Bar	51.60" – 54"

