

Instructions for Extensions 5266 / 5267 / 5276 / 5277 / 5286 / 5287

Extensions 5266 / 5267 for use with 30" high gate models: 5264, 5264S
 Extensions 5276 / 5277 for use with 36" high gate models: 5274, 5274S
 Extensions 5286 / 5287 for use with 42" high gate model: 5285

Important: Please keep for further reference.

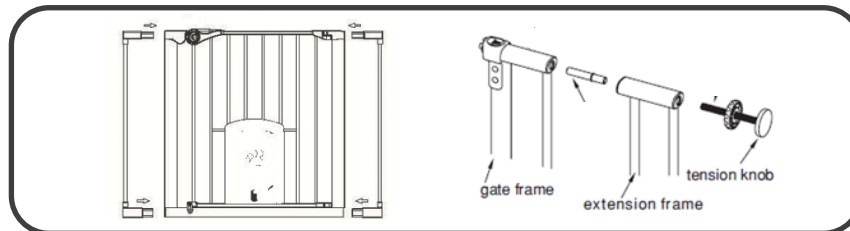
For helpful tips and instructions, please visit our website: www.northstatesind.com
 or contact our Customer Care department via email: CustomerService@northstatesind.com
 Phone (763) 486-1756 or Toll Free: (800) 848-8421

**NOTE: When using multiple extensions, place as equally as possible on either side of the gate frame.
 The maximum number of extensions that can be used with this gate is three.**

Installation and Operation

Step 1: Measure the width of the opening where you intend to install the gate. Please refer to the chart below to determine the correct installation configuration.

Step 2: To add an extension to the gate, insert the extension pins into the holes on the outside of the gate frame. Next, slip the extension over the pins. Finally, slide the spindles with tension knobs completely into the holes on the outside of the extension.



Gate frame

<i>Extensions Needed</i>	<i>Opening Size Range</i>
None	29.8" – 32.6"
1-Bar	32.5" – 35.4"
1-Bar + 1-Bar	35.3" – 38.1"
2-Bar	35.3" – 38.1"
2-Bar + 1-Bar	38.0" – 40.9"
2-Bar + 1-Bar + 1-Bar	40.8" – 43.6"
2-Bar + 2-Bar	40.8" – 43.6"
4-Bar	40.8" – 43.6"
2-Bar + 2-Bar + 1-Bar	43.5" – 46.4"
4-Bar + 1-Bar	43.5" – 46.4"
2-Bar + 2-Bar + 2-Bar	46.3" – 49.1"
4-Bar + 1-Bar + 1-Bar	46.3" – 49.1"
4-Bar + 2-Bar + 1-Bar	49.0" – 51.9"
4-Bar + 2-Bar + 2-Bar	51.8" – 54.6"
4-Bar + 4-Bar + 1-Bar	54.5" – 57.4"
4-Bar + 4-Bar + 2-Bar	57.3" – 60.1"
4-Bar + 4-Bar + 4-Bar	62.8" – 65.6"

1-Bar
 2 ¾" Extension
 (2 Extensions
 included with gate)

Model 5266 – 30" high
 Model 5276 – 36" high
 Model 5286 – 42" high
 2-Bar
 6" Extension
 (sold separately)

Model 5267 – 30" high
 Model 5277 – 36" high
 Model 5287 – 42" high
 4-Bar
 12" Extension
 (sold separately)