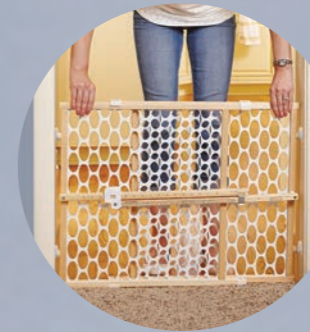


TODDLEROO

BY
northstates®

QUICK-FIT® OVAL MESH GATE



1
Expand the gate
in the opening



2
Hold the panels
firmly in place



3
Pull up 2 to 3 clicks
and then lock down

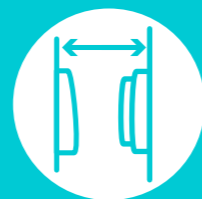
MEMORY FEATURE
RETAINS OPENING SIZE



26 1/2" - 42"
WIDE
23" HIGH



BETWEEN
ROOMS AND
DOORWAYS



PRESSURE
MOUNT

EASY, FRUSTRATION-FREE INSTALLATION

6 to 24 MONTHS • QUICK-FIT® TECHNOLOGY



MADE IN
USA





QUICK-FIT[®] OVAL MESH GATE

Installation Instructions:

No Tools Required

Fig. A



1 Place gate on floor and expand in the opening. Be sure to adhere the wall cups (door sockets) to the opening wall or surface where the four bumpers touch.

NOTE: Be sure to place the gate so the locking bar is on the side of the gate that will be away from the child (Fig. A).

Fig. B



2 Hold the panels firmly together at the top of the gate so that the panels are unable to move (Fig. B).

3 Pull the locking bar up 2 to 3 clicks and then lock down into place.

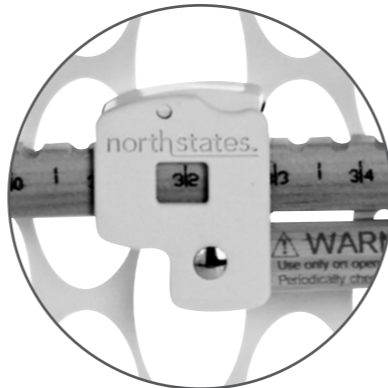
This should put pressure on the 4 rubber bumpers holding the gate in place (Fig. C).

Fig. C



4 If the gate is loose in the opening, pull up 1 more click until you get a good solid fit in the opening. If the gate is too tight in the opening, do not force the locking bar down. This could put too much pressure on the gate, causing damage to your opening, the gate or both. (The locking bar should have a slight bow.) However if the bow is too large, simply lift up on the locking bar and press the white button on the latch to reduce the width of the gate (Fig. D).

Fig. D



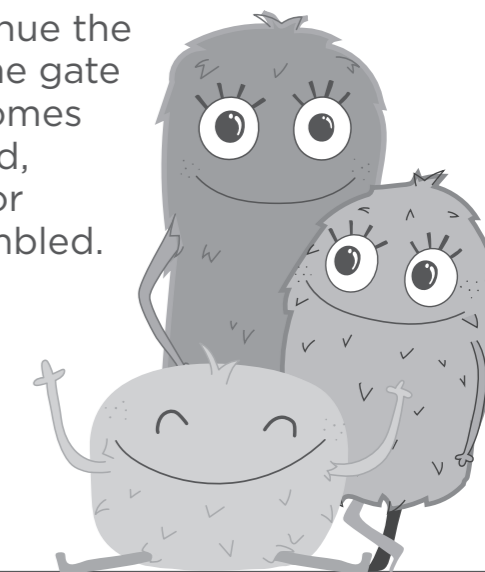
5 To open the gate, simply lift up on the locking bar and remove the gate from the opening (Fig. C).



Care and maintenance:

To clean: Wipe with a clean, soft, damp cloth and dry thoroughly. Do not use harsh or abrasive cleaners. Always keep the rubber bumpers clean.

Discontinue the use of the gate if it becomes damaged, broken or disassembled.



WARNING

- You **MUST** install wall cups to keep gate in place. Without wall cups the child can push out and escape.
- **STOP** using when a child can climb over or dislodge the gate.
- **Children have died or been seriously injured when gates are not securely installed. ALWAYS** install and use gates as directed, using all required parts.
- Use only with the locking mechanism securely engaged.
- **NEVER** use to keep child away from pool.
- Intended for use with children from 6 months through 24 months.
- Install with locking mechanism on side away from child.
- This product will not necessarily prevent all accidents. **NEVER** leave child unattended.
- To prevent falls, **NEVER** use at top of stairs.

ADVERTENCIA

- **DEBES** instalar copas de pared para mantener la puerta en su lugar. Sin vasos de pared, el niño puede empujar y escapar.
- **DEJE** de usarla cuando un niño pueda trepar sobre la puerta o desprenderla.
- **Niños han muerto o sufrido lesiones graves porque una puerta no estaba instalada de manera segura. SIEMPRE** instale y use la puerta conforme a las instrucciones, utilizando todas las piezas requeridas.
- Use sólo con el mecanismo de bloqueo y fijación firmemente enganchado.
- **NUNCA** debe usarse para mantener a un niño alejado de una piscina.
- Este producto está diseñado para niños de 6 a 24 meses de edad.
- Instálela solamente con el mecanismo de cierre/traba activado firmemente en el lado opuesto al niño.
- Este portón no necesariamente evita todos los accidentes. **NUNCA** deje a los niños sin supervisión.
- Para prevenir caídas, **NUNCA** use el portón en la parte superior de las escaleras.

THIS PACKAGE CONTAINS ONE PRE-ASSEMBLED GATE AND WALL CUPS.

Due to product improvements, the actual product styling and colors may vary.

For patent information visit www.northstatesind.com/patents

MADE IN USA



sample tested to meet U.S. Federal ASTM and other safety requirements