

# northstates®

*Quality Products  
for the way you live*

## INSTRUCTIONS FOR MODELS 8730 / 8731



**IMPORTANT: PLEASE KEEP FOR FUTURE REFERENCE!**

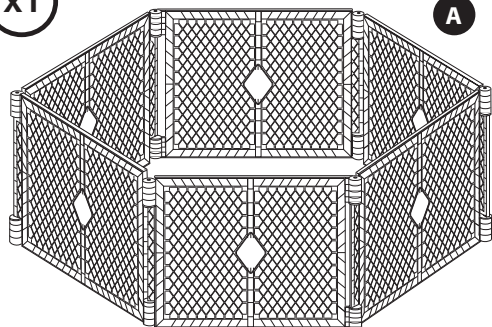
For helpful tips and instructions, please visit our website: **[www.northstatesind.com](http://www.northstatesind.com)** or  
contact our Customer Care department via email: **[CustomerService@northstatesind.com](mailto:CustomerService@northstatesind.com)**  
Phone: (763) 486-1754 or Toll Free: (800) 848-8421

# **WARNING**

- Children have died or been seriously injured when enclosures are not properly secured.
- **ALWAYS** install and use enclosures as directed using all required parts.
- **STOP** using when a child can climb over or dislodge/open the enclosure.
- This product will not necessarily prevent all accidents.
- **NEVER** leave child unattended.
- **NEVER** use to keep child away from pool.
- Use only with the locking/latching mechanism securely engaged.
- This product intended for use with children from 6 months up to 24 months of age.
- Periodically check all fasteners to be sure they are tight and secure, stop using this enclosure if any parts become damaged.
- Do not use this product on a smooth slippery surface unless skid-resistant pads are used (included).
- Do not attempt to use this enclosure in temperatures less than 40 degrees F, or damage may result.
- Do not use as a barrier for stairways, stoves or heaters.
- Do not use on uneven surfaces.
- Do not connect more than 8 panels in one enclosure.

## Your enclosure contains the following:

x1



A

x12



B

A. Enclosure  
B. Skid-Resistant Pads

To ensure safe operation, additional or replacement parts should be obtained only from North States or its authorized distributors. Contact information appears on the cover of these instructions. Replacement parts can be ordered at [www.northstatesind.com](http://www.northstatesind.com)

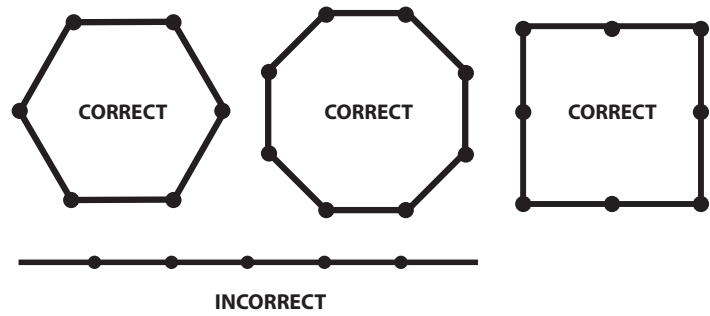
Any damage to property during installation of your enclosure is the sole responsibility of the end user.

## PROPER SET-UP CONFIGURATIONS

We recommend that you use your Superyard only as an enclosure, not as a barrier. See FIGURE 1 for proper configuration.



FIGURE 1



## INSTRUCTIONS FOR INSTALLING SKID-RESISTANT PADS

Your North States enclosure can be used on hard surfaces (hardwood floors, tile, linoleum, etc.) by installing the enclosed skid-resistant pads.

1. Ensure that the surface of the yard panel is clean and dry prior to installing the pads.
2. Remove a single pad from the release paper as shown in FIGURE 2.
3. Place the adhesive side of the pad on the bottom edge of the yard panel approximately 2" from the center of each hinge, as shown in FIGURE 3.
4. Repeat steps 2 & 3 for each of the remaining pads.
5. Maximum skid-resistance will be maintained by cleaning the bottoms of the pads periodically with a water-dampened clean cloth.

FIGURE 2

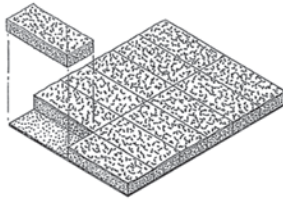
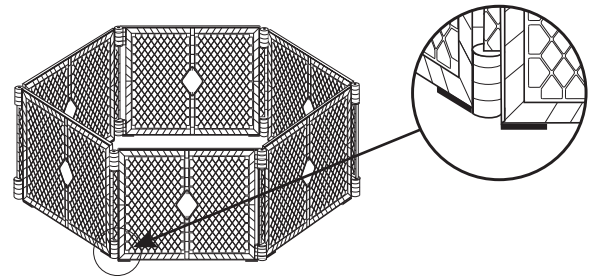


FIGURE 3



## SET-UP INSTRUCTIONS

Begin setting up your enclosure by carefully unfolding the panels to the proper configuration as shown on page 3.

Once the panels are unfolded and formed into the (unconnected) shape of a hexagon, confirm that the dark gray carpet foot (D) is facing upwards, as shown in FIGURE 4.

Begin connecting the panels together by gently lifting up on panel 1 and setting the opening "A" (as shown in FIGURE 5) over pin "B" located on panel 2.

Locate the slot on the lower end of cylinder "D" as shown in FIGURE 6. This slot tapers to an opening that accommodates pin "C".

Gently press down on panel 1 while aligning pin "C" with the slot in cylinder "D". While maintaining downward pressure on panel 1, lift slightly on panel 2, and slide pin "C" through the slot and into the opening as shown.

FIGURE 4

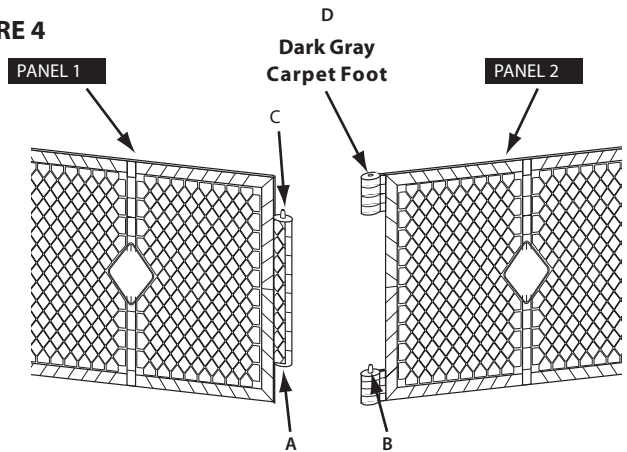


FIGURE 5

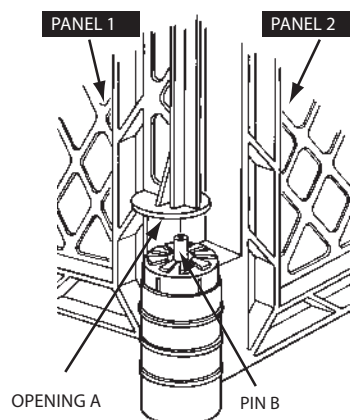
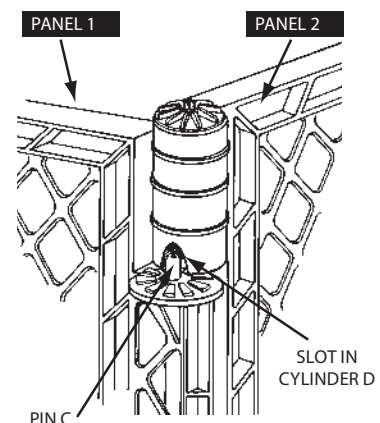


FIGURE 6





## EXTENSION INSTALLATION

A two-panel extension is available either from your retailer or direct from [www.northstatesind.com](http://www.northstatesind.com).

The extension contains two additional panels that enable you to expand the size of your enclosure from 18.5 square feet to 34.4 square feet.

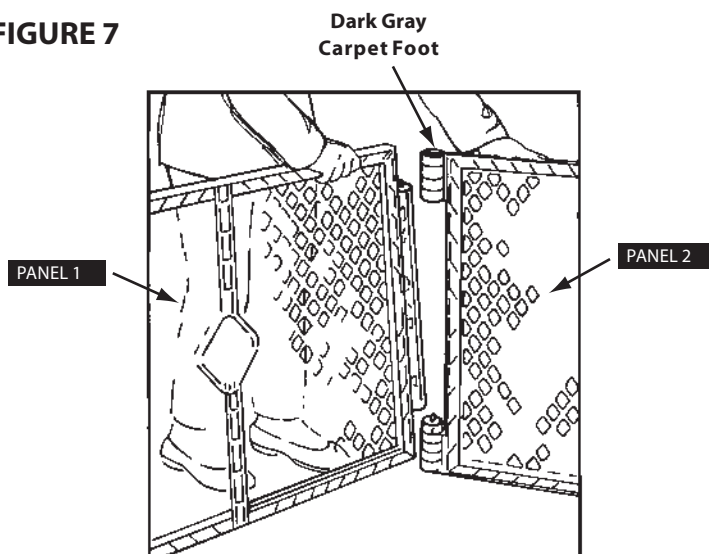
The extension is installed by following the "SET-UP INSTRUCTIONS" that appear on page 3.

## TO OPEN ENCLOSURE

To disconnect two adjoining panels, select one of the joints where a dark gray carpet foot is facing up, as shown in FIGURE 7.

Gently press down on panel 1 while lifting slightly on panel 2. This will enable you to slide pin "C" free of cylinder "D" (see figure 6). Then lift up on panel 1 until opening "A" (see figure 5) is free of pin "B".

**FIGURE 7**

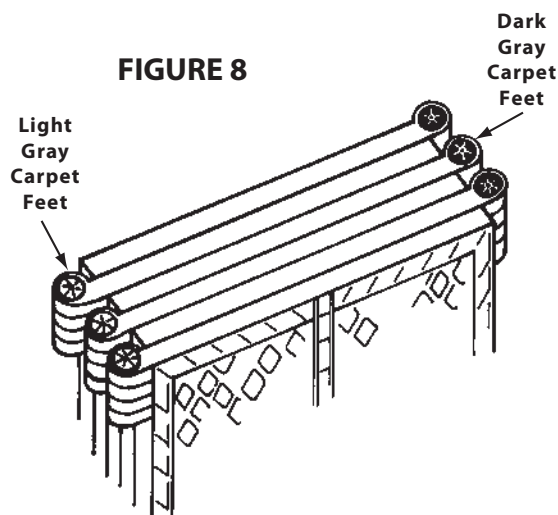


## FOLDING FOR TRANSPORT OR STORAGE

Your enclosure folds compactly for transport or storage. You must, however, fold the panels properly. Disassembly and folding is accomplished by following the "TO OPEN ENCLOSURE" instructions above.

Gently fold the panels (without jerking them or slamming them together) in alternating directions like an accordion as shown in FIGURE 8.

**FIGURE 8**



## CLEANING INSTRUCTIONS

Your enclosure is manufactured from durable, weather-resistant plastic panels. To clean, wash the panels with mild, non-abrasive detergent, rinse with clean water, and allow to dry thoroughly.

## REPLACING A PANEL

A broken panel can easily be replaced by obtaining one from the manufacturer. [www.northstatesind.com](http://www.northstatesind.com)

Remove the broken panel by following the "TO OPEN ENCLOSURE" instructions (above).

Install the replacement panel by following the "SET-UP INSTRUCTIONS" (page 3).